

MANORCON XXXIX

2 PM Fri 21st July to 2 PM Mon 24th July 2023

The Village Hub and The Point, University of Leicester

(The Village, University of Leicester, Stoughton Drive South, Oadby, LE2 2ND)

Programme Booklet

This booklet is also available to download from the ManorCon Website.

Convention Information

Pages 1, 2, 3

Welcome	Page 1
Timetable	Page 2
Information for First-Timers	Page 2
Who to ask for help. Where to find them. What to do if you have a problem.	Page 3
Porters Lodge and contact info	Page 3

The Convention Building and Facilities

Pages 3, 4, 5, 6, 7

The Bedrooms and Room Keys	Page 4
Gaming Areas and Noticeboards	Page 4
Parking	Page 3
The Bar and the Servery	Page 4, 5
Maps – Site Plan & The Hub Room Layout	Pages 6, 7

Tournaments, Stalls and Other Events

Pages 5, 8

Meeple Games Stall	Page 5
Second Hand Games Stall	Page 5
Tournament, Event and Pop Quiz Information	Page 8
Upcoming Conventions	Page 9

The Surrounding Area

Pages 10, 11, 12

Map of Oadby Centre	Page 10
Banks and Shops	Page 10
Restaurants and Takeaways in Oadby	Pages 11, 12
Restaurants, Cafes and Nightlife in Central Leicester	Page 12
Taxis	Page 12

Welcome

Welcome to ManorCon, the thirty ninth of the series and the fifteenth one to be held in Leicester. As per last year and as we were in the past, for our ‘experienced’ attendees, we are back at The Village Hub (formerly Stamford House) and The Point (formerly known as the Lasdun Dining Hall) at the University of Leicester. The Committee have been working very hard behind the scenes, along with the University, to get the venue ready, and once again we have a number of tournaments and events organized for you.

The long running 18XX tournament is taking place once again (with a re-tweaked scoring system designed to avoid last year’s unfortunate outlier). The ever popular Midnight Party will continue to take place at midnight each evening (in the Bar) during the convention. We also have the Pop Quiz on Saturday night, run by Phil Hannay. Also, Meeple Games are back for a fourth year with the Games Stall in the main gaming area. Unfortunately, the Second Hand Games stall will not be taking place this year. Likewise, there is no Treasure Hunt this year, unless someone turns up with a pre-prepared one.

As mentioned above, we are back at The Village. The accommodation is split between Bowder Court, The Pavillions (over the road at John Foster) and the Lasdun Blocks. The gaming areas are still split between two locations: the main gaming area is located in The Point where our meals are served, and in The Village Hub where the Bar is located – note that we also have access to the rooms upstairs in The Village Hub.

So, do have a fantastic convention everyone. There should be something for everyone, whether you are an old-timer, or here for the first time. Whatever you get up to, the important thing is to get on with the games, and most of all, to have fun and enjoy yourselves – that’s what we are all here for!

Steve Jones, Chairman of the ManorCon Organising Committee.

Convention Hours

The convention opens at 14:00 on Friday and closes at 14:00 on Monday. The Point will be open from 07:15 to 01:00, and The Village Hub from 07:15 until the last committee member goes to bed (which given Dave and Nick are both around, will be sometime in the small hours...).

You will be given a name-badge when you arrive – please wear this at all times. It will be colour-coded to display your status and help both us and the university staff. Please do not swap name badges with anybody else! **Residents will need their badge for breakfast.**

Timetable

Friday 21st July:

14:00	Doors open
14:00	18XX tournament starts
18:00-20:00	Dinner
Midnight	First Midnight Party round

Sunday 23rd July:

08:00-09:30	Breakfast
12:30-14:00	Lunch
18:00-20:00	Dinner
Midnight	Third Midnight Party round
	End of 18XX tournament

Saturday 22nd July:

08:00-09:30	Breakfast
12:30-14:00	Lunch
18:00-20:00	Dinner
22:00	Pop Quiz (Bar area)
Midnight	Second Midnight Party round

Monday 24th July:

08:00-09:30	Breakfast
09:30	Deadline for checking out of all rooms.
12:30-14:00	Lunch
14:00	Doors close

Bar open from 12:00 to 01.00 within the convention hours above, as long as there is sufficient trade to keep it open.

Information for ManorCon first-timers

So, this is your first ManorCon, and hopefully you're looking forward to the experience. However, it can be a wee bit daunting for the newcomer, so here are a few tips to make your life just that little bit easier!

Make sure you have a look through this booklet. There's little more disappointing than reading the booklet on the train home and discovering that you missed taking part in something interesting because you didn't know it was taking place.

With over 200 other people attending, you should be able to find plenty of other people here who want to play the same sort of games as you. But with so many people around, how do you find the ones with similar tastes? There are several ways.

If you want to play in the 18XX tournament, there will be plenty of games played during the weekend, upstairs in the Village Hub. Usually several games start immediately after breakfast, with a few games starting later in the day.

If you want to play an ad-hoc game, then have a look for other people already looking for a game, and if you can't find any, then you could put up a request on a noticeboard; ask at the ManorCon Registration Desk if you need paper, a pen and drawing pins for this. Bear in mind, however, that trying to find someone you've never met before in a crowd of 200 people is not easy, so make sure that your request form suggests a time and place to meet, either to play the game or merely to discuss when to play it. Or leave your mobile number (if you are lucky enough to have signal in the gaming rooms!).

Another approach is to start setting a game up on a table in a prominent position, and wait for people to ask if you are looking for players. You could even put a sheet of paper saying "Players wanted" on the table while you're setting the game up.

If you aren't looking for a particular game, you just want to play something, then there are several things you can try doing:

- Have a wander round and see what's being set up. If a game that looks interesting, ask about it. What is it, how long does it take, do the other players mind teaching you? Most people are happy to teach a new player, and if they aren't, they will often know someone else who is. Do bear in mind, however, that most people tend to underestimate how long games will take!
- Try asking at the ManorCon Registration Desk to see if anyone there is looking for a game. Or if the ManorCon Registration Desk is closed, ask the Committee Member on Duty instead.
- Look for other people looking equally lost, and ask if they are looking for a game.

At the end of the day, the aim of ManorCon is to play games and have fun. We hope you succeed in both, and that we will see you back next year as a new member of the ManorCon regulars.

Committee Members

In order to make it easier for you to find a committee member if you have any problems, the seven committee members will be wearing large red printed name badges. The committee members are:

Steve “The Alarm clock” Jones – The Chairman. Steve has been on the ManorCon committee since the late 1980’s, becoming the chairman in 1999. He manages the Convention finances, runs the 18XX Tournament, and liaises with the University. Steve also does his own stunts.

David Norman has been attending conventions since 1994. Since then, he has become a regular attendee at conventions, gaining particular renown as a Tournament Director for many, many Diplomacy tournaments. He also updates the ManorCon WebPages (but usually only when prompted by someone else).

Gary Duke spent a number of years playing games with people on the registration desk, which made him an ideal candidate to take charge of it. He is also in charge of running the advanced postal and online booking systems and the room allocation system.

Mark Stretch originally attended ManorCon over 30 years ago as part of the Oxford Mob. He is in charge of publicising ManorCon, and can often be found answering questions about the convention on Facebook.

Nick Harrison joined the committee as part of the Spielchamps organising team and has stayed on despite Spielchamps having moved on to pastures new.

Dave Simpson joined the committee due to his involvement with the tournament Diplomacy scene and is back as editor of this booklet after taking last year off. Living in Brighton, Dave acts as our source of local knowledge for the convention (it helps that he’s originally from Leicester).

Tracey Rigby asked to join the committee last year (see, someone reads this booklet as we were asking for an extra pair of hands in this exact space one year ago). Even better, we couldn’t put her off when we talked about it during the course of the convention.

Finding a Committee Member

Whilst there is a game room open, there will always be a committee member available. If you need a committee member, please try to find the member who is on duty at that time. They can be found in several ways:

- 1 Look for the balloon. We will have a helium balloon, which will be hovering above the Committee Member on Duty. Unless Gary’s destroyed it again.
- 2 Ask at the ManorCon Registration Desk. There will often be a Committee Member there (or directions to one!). This is located just inside the side entrance of The Point (the dining hall).
- 3 From outside the convention, the committee will hopefully have a signal on the ManorCon Mobile Number, 07391 046410.

24 Hour Porters

The Village has a 24-hour porter service which covers the whole campus and is located in John Foster reception. There should always be someone on duty in John Foster Hall reception, even at night. John Foster reception can also be contacted by phone on 0116 223 1493 (ext 1493 internally).

Problems

If you have any problems with your room (e.g. your key doesn't work, the light bulb's blown, etc), please contact the Porters at John Foster Hall in the first instance (see above). Likewise, if there are any general "housekeeping" problems such as blocked or flooded toilets, or if your room hasn't been cleaned and serviced, please bring them to the attention of the Porters so that they can be put right at the time, rather than waiting until the convention is over and then complaining to us! If, on the other hand, you have any problems relating to the convention itself, rather than the venue, please seek out the Committee Member on Duty so that they can be dealt with promptly. If you accidentally break anything, please report it to a committee member or to the Porters. It is very embarrassing for the ManorCon committee if damage goes unreported and is subsequently discovered by the site staff.

Parking

There are three recommended car parks for ManorCon attendees. There is also access to the games rooms for loading and unloading only. From Stoughton Drive South, look for the entrance with the blue sign, “The Village Hub”. Please do not park anywhere in this area, except while loading or unloading.

For those staying in Bowder Court (which is the en-suite accommodation close to our venue for the last few ManorCons), there is a reasonable size car park around and behind Bowder Court. Access is from Manor Road. From the junction with Stoughton Drive South, the entrance is the first turning on the right which doesn’t have a low kerb to cross. There is a white sign which simply says “Car Park”.

For those staying in Lasdun (the non-en-suite accommodation), the car park is accessed from Stoughton Drive South. Look for the blue sign “Lasdun Car Park”, shortly after passing Southmeads Road.

For those staying in John Foster Hall, there is parking outside the John Foster reception and in bays around the accommodation blocks themselves. Again, access is from Manor Road. From the junction with Stoughton Drive South, the entrance is on the left, immediately after the bus stop, signed John Foster Hall.

The Bedrooms

Room keys will be available for collection from the ManorCon registration desk from 14:00 on Friday. You might be able to collect your key from the main Reception of John Foster Hall before the convention starts, but we won’t have them. At some point in proceedings on Friday, any remaining keys will return to John Foster Reception.

This year, most of the en-suite bedrooms are located in Bowder Court, with one block on the John Foster site (aka The Pavilions). These blocks each have communal kitchens, and the John Foster Block has lifts, which is useful for moving those boxes of games – but take it from someone who knows, 7 people in one lift is too many. The non-en-suite accommodation is in Lasdun. These have communal kitchens and toilets/bathrooms. Rooms service will be done every day, and won't start until after 09:30. The bedrooms have bedding, a kettle, soap and a small amount of shampoo. Kitchens in the blocks have fridges, do not prop kitchen doors open as they're alarmed.

Note that all bedrooms have a Cat-5 Ethernet socket which can be used to connect a laptop to the Internet. However, no network cable is supplied, so you will have to provide your own. There may be phones in the bedrooms, but they're not in service.

If you're going to be heading to bed in the small hours, maybe just a tad the worse for wear, please try to consider of the feelings of your fellow gamers, who may be trying to catch a little shut-eye before an early start. i.e. **PLEASE KEEP THE NOISE DOWN!!!** However, this cuts both ways - please be considerate of us night-owls if you're up at the crack of dawn.

On your day of departure, you must vacate your room and return your key to John Foster Reception or the box on the ManorCon Registration Desk by 09:30. The University no longer charges for lost keys, but to avoid them reconsidering this, it is in your interest to look after your room key!

The Gaming Areas

The main gaming area is located in The Point. Upon exiting The Village Hub, bear right and follow the path leading to the rear of the site. The Point is located to your left as you approach it; if you are not sure, see the site plan on page 6. The main gaming hall is open from 07:15 until 01:00 each night. When moving between it and The Village Hub during the late evening, you need to be fairly quiet. We ask for your co-operation in this matter. If you wish to carry on gaming very late, you will need to adjourn to the gaming areas in The Village Hub which will be open later.

The other gaming areas are located in The Village Hub – see the floor plan on page 7 of this Programme Booklet. There are also a number of small gaming rooms located on the first floor, which is primarily where the 18xx will take place. The Junior Common Room will not be available for gaming during the Pop Quiz (Saturday evening). The remaining rooms, and the above rooms when not reserved for other uses, are available for open gaming. Note that the Junior Common Room, Lounge Area and Games Room are a single, continuous open area.

A large number of rubbish bins are provided in The Point and other areas; note that some of these will be for recyclables of various types. Please can you help to keep the gaming areas tidy by putting your rubbish in the bins supplied when you have finished with it.

Noticeboards

There are two main Noticeboards, one located just inside The Point and the second on the wall next to the Bar. You can find anything there, from people looking for players for a more obscure game to completely non-gaming notices. As you would expect, the committee asks that all notices be polite and non-confrontational, and reserves the right to remove any notice that they feel to be inappropriate.

The Servery and Bar

The Servery

The Servery in the Food Court is open at the following times :

Breakfast:	08:00 – 09:30	(Saturday, Sunday and Monday)
Lunch:	12:30 – 14:00	(Saturday, Sunday and Monday)
Dinner:	18:00 – 20:00	(Friday, Saturday and Sunday)

We have exclusive use of the Servery during the course of the convention. The Servery provides a full English breakfast for free to all resident attendees upon production of their convention badges – so don't forget your badge, and don't lose it! At lunch and dinner, the servery operates on a cafeteria basis where payment is on a card only basis, the new normal. Hot and cold meals are available for both lunch and dinner, and baguettes/sandwiches and rolls will also be available at lunchtime. Monday lunchtime will see a cold-only option as the convention is starting to close down at that point.

You are free to eat your meals anywhere you please. You may, if you wish, take your meal tray (provided, we hope!) to one of the other gaming rooms to eat; in this case, you should return it to the Servery promptly.

Tea and coffee facilities will also be provided in the Servery area, free of charge to ManorCon attendees.

Other Refreshment Supplies

There are no food vending machines in the convention area, but there are snacks available from the bar. There is also a vending machine in the main reception building over at John Foster Hall. Kettles, cups, etc are provided in all the bedrooms, along with supplies of tea, coffee and milk.

The convention is a 20 minute walk away from an Asda supermarket and Oadby centre, where there are plenty of shops and restaurants. For further information, see page 10 and 11.

The Bar

The bar is run by the University catering team and is located in The Village Hub. We have asked for the bar to be open at the following times:

Friday:	14.00 – 01.00
Saturday and Sunday:	12.00 – 01.00
Monday:	12.00 – 14.00

The bar reserves the option to close early if not doing much business.

Fortunately, the bar is able to stock a selection of Real Ales. A wide range of other drinks are available:

- Real Ale: Sharps Atlantic Pale Ale (4.2%), Sharps Doom Bar (4%), Hook Norton Old Hooky (4.6%), Portobello Brewery Star (4.3%).
- On draft: Amstel, Fosters, Strongbow.
- Bottled: San Miguel, Budweiser, Peroni, Old Speckled Hen, Newcastle Brown, Doom Bar, Guinness (canned!)
- Wine by the glass
- Gin and Tonic
- A range of soft drinks, fruit juice and water

There will also be a range of bar snacks available.

Please Note: Due to the licensing laws you are not allowed to bring your own alcohol onto the site. Please do not embarrass the Committee by flouting this ruling, as this will make it difficult for us to maintain good relations with the University. You have been warned!

Meeple Games Stall

Meeple Games will be running a Games Stall over the course of the weekend. They have the sole right to sell first-hand games and gaming accessories at ManorCon, and anyone else wanting to do so must speak to the committee first. They will be located in the Dining Room. As in previous years, there will be a 10% discount available on all games sold at their stall. Most of your favourite games should be available.

Gym and Pool

Historically, a gym and a pool has been available free of charge to University residents, which includes ManorCon attendees staying on site, but this was closed last year. If this is open, it can be found at - Roger Bettles Sports Centre, 40 Manor Road, Oadby, LE2 2LL Monday to Friday 06:30-22:00. Saturday and Sunday 08:00-20:00. (this is located to the right hand side of the map overleaf, further along Manor Road).

Help Needed

We are looking for a number of volunteers for ManorCon 2024:

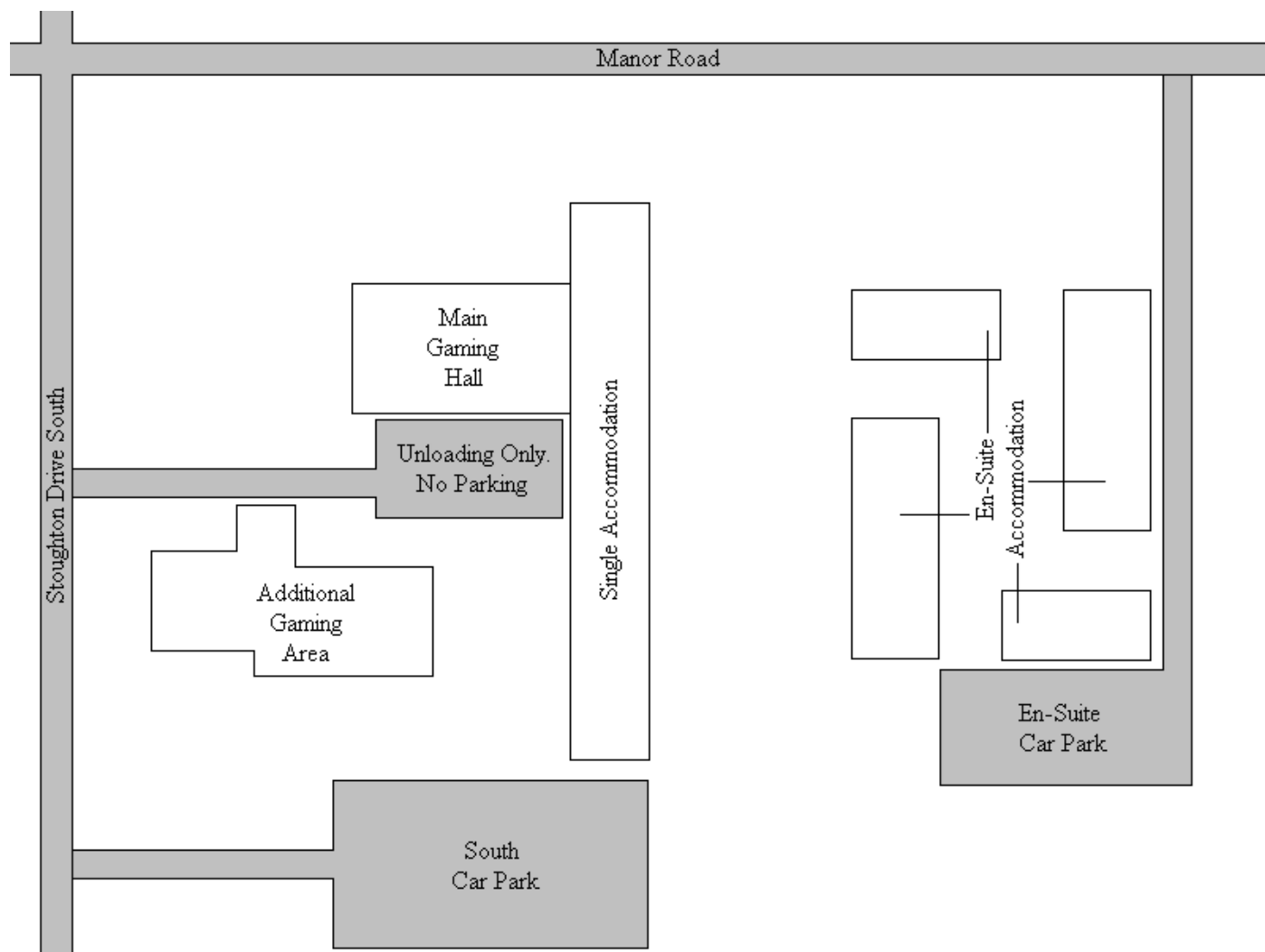
- We have not been able to run the Treasure Hunt again this year. Normally the winning team sets the hunt for the following year – so we need someone to volunteer to be the ManorCon 2023 Treasure Hunt champions, otherwise the Treasure Hunt will go the way of the Croquet!
- After running the Second Hand Games Sale for many years, Steve Bailey stepped down after last year's ManorCon. Steve is available to discuss how it all works and will provide some written notes as well, should someone wish to carry on this fine ManorCon tradition.

If you can help with either of these items, please get in touch with a committee member.

Maps of the ManorCon Site

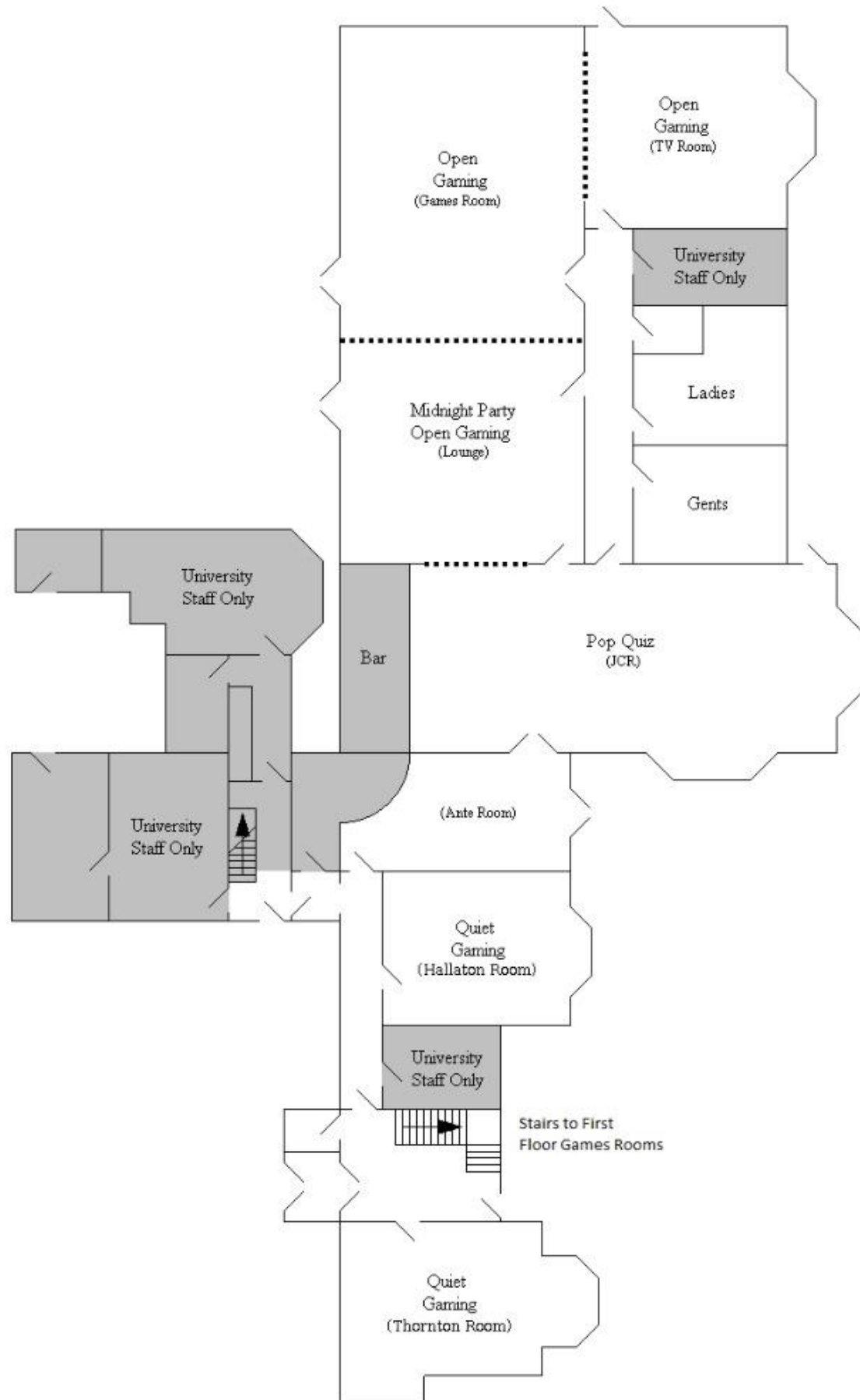
Site Plan

Below is a general map of the relevant portion of the University of Leicester, including The Point (the main gaming hall) and The Village Hub (Additional Gaming).



Gaming Plan

The Village Hub, University of Leicester, Stoughton Drive South, Oadby, LE2 2ND



Tournament Overview

As ever, there are a number of tournaments and other events at ManorCon. All welcome beginners, although in the case of Midnight Party, you should let the Tournament Director know a few minutes in advance of the start time for the round, in order to make sure you know the rules, and are ready to play when the round starts. In the case of 18XX, just find a game starting and ask if they mind a beginner joining in. Most players will welcome new players (although some may want a serious game, in which case, ask them to direct you to someone who can teach you).

Tournament & Event Details

18XX is run by Steve Jones. The tournament includes a whole stable of games based around the theme of making money from running railroads, with each game in the stable being named after a year from the eighteen hundreds (hence the tournament name). Essentially, they are complex business games in which the players generally buy shares in the various railroad companies that are available, and attempt to run them for profit (assuming you manage to get control of a company). Each game consists of two interacting sub-games: one in which the players buy and sell shares in the railroad companies, and one in which the players run the railroad companies (this last involves building track, buying trains and running services). 18XX games tend to be long (from 4 to 10 hours). The rules are highly complex and vary from game to game within the genre. If you want to try one of these games out, they will be played in Hallaton (the quiet gaming room downstairs in The Village Hub) or in the upstairs rooms in The Village Hub, but you are advised to turn up early (just after breakfast, 09:00) to be assured of getting into one of the three or four games that start each morning. There might be an 18XX noticeboard available in the Hallaton room this year.

The tournament is run on an ad-hoc basis – games are played, the result is put in the official results envelope, and at the end of the weekend, the tournament director takes all the results and calculates the overall rankings. The rules, results envelopes, etc, can be found in Hallaton (the Quiet Gaming room). The deadline for results is midnight on the Sunday. Check the rules for more details.

Midnight Party is a three-round tournament played late on the Friday, Saturday and Sunday nights during the convention, and is run by Steve Guest. Each round starts at Midnight, probably in the Lounge. The idea of the game is to avoid being caught by Hugo the Ghost in a kind of musical chairs in which a limited number of rooms (to hide in) take the place of the chairs. It started many years ago as an unofficial event but has become more and more popular (and cultish) each year. Each round takes about 45 minutes, and it is very easy to learn how to play.

The Pop Quiz is at 10:00pm on Saturday in the Bar area. It will be run by Phil Hannay this year and is for teams of ideally 4 (although smaller teams are acceptable). Turn up at 10pm for music and fun. Teams will be formed at the start, so don't worry if you don't have a team before you arrive.

Steve Jones' Personal Games Recommendations

Back in 2019, I mentioned a number of science-based games I had recently acquired. I now have a number of new ones, including "Genotype", a worker placement game based on Mendelian Genetics where the players are assistants helping Gregor Mendel with his pea growing experiments, and "Cellulose", another worker placement game set in a plant cell. I should mention that both "Genotype" and "Cellulose" are the best science-based games that Genius Games have published so far; they are both very, very good games (and are not overly complex). I'll also make a shameless plug for Vital Lacerda's brilliant "On Mars" and "Weather Machine" both of which I hope to play over the weekend. Also, I hope to play "Darwin's Journey", a very interesting worker placement Euro game, and "Mosaic", a Civ game more in the spirit of the original Francis Tresham "Civilization". If you fancy trying any of these, including "Subatomic", "Periodic" and "Cosmogenesis", please see Steve. Make sure you ask how long it will take to learn the rules beforehand!

Upcoming Conventions

Mindsports Olympiad

JW3, Finchley Road, London
20-28 August 2023
<https://mindsportsolympiad.com/>

Boardgames Holiday

Le Pas Opton, France
11-18 September 2023
springharvestholidays.com/feature-weeks/board-games-holiday

Raiders of the Games Cupboard LVIII

Waterside Community Centre, Burton-upon-Trent
23 September 2023
www.raidsofthegamecupboard.co.uk

Castlecon Autumn 2023

Flanesford Priory, Goodrich
26 September -10 October 2023
<https://boardgamegeek.com/guild/2397>

Tring Con

Marsworth Millennium Hall, Marsworth, Herts
7 October 2023
tringcon.org

MidCon 2023

Derby Mickleover Hotel
3-5 November 2023
MidCon.org.uk

GridCon 4

Holiday Inn, Taunton
17-19 November 2023
gridcon.co.uk

Raiders of the Games Cupboard LIX

Waterside Community Centre, Burton-upon-Trent
January 2024
www.raidsofthegamecupboard.co.uk

SoRCon 15

Holiday Inn, Festival Leisure Park, Basildon, Essex
23-25 February 2024
www.sorcon.co.uk

Raiders of the Games Cupboard LX

Waterside Community Centre, Burton-upon-Trent
March 2024
www.raidsofthegamecupboard.co.uk

BayCon 2024

Exeter Court Hotel, Kennford, Devon
3-7 April 2024
www.facebook.com/groups/baycon/

ManorCon XL

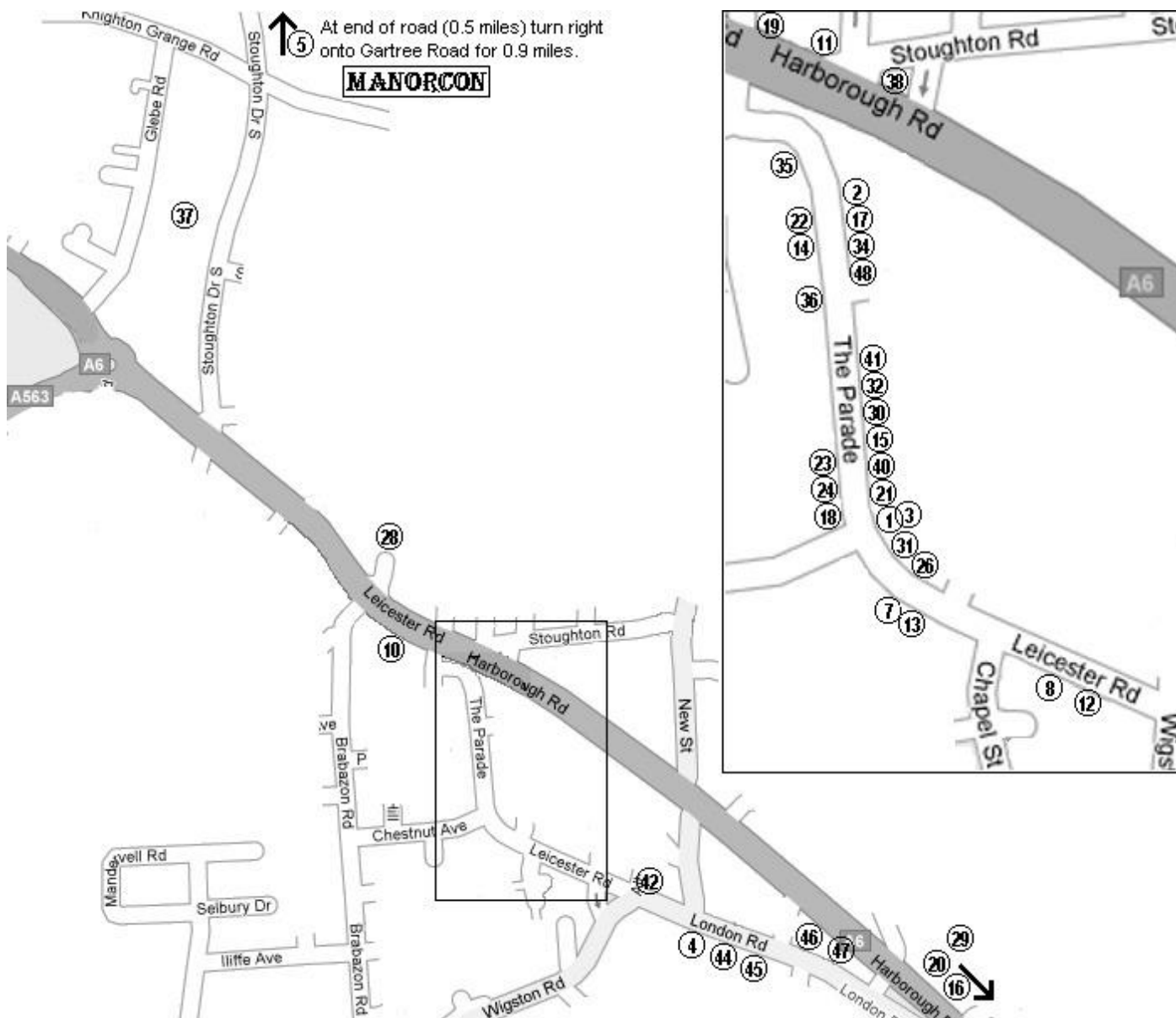
University of Leicester, Oadby, Leicester
19-22 July 2024
www.manorcon.org.uk

The Surrounding Area

We've been in Leicester for quite a few years now and our knowledge of the surrounding area is growing all the time. This is mainly from the feedback we get from you. If you do use anything mentioned in this section or anything not mentioned that should be included, please make sure you mention it when you fill in a questionnaire at the end of the convention. Thank you!

Oadby centre

The convention is a 15 to 20 minute walk from the local shops in Oadby centre. Oadby is a suburban centre on the outskirts of Leicester, and has a good collection of shops, restaurants, etc. To get to Oadby, walk out to Stoughton Drive South, turn left and follow this down to where it runs into the A6; once there, turn left and follow the A6 into Oadby centre. The location of restaurants, banks and other facilities listed in the following pages is shown on the map. Positions within a street are fairly accurate, but they are a mix of experience from previous years, feedback from attendees, and guesswork, so please don't rely on the map alone!



Local services

Banks, Building Societies etc – head for the Parade in Oadby! **Barclays Bank (21)**: 25 The Parade. **Nationwide Building Society (22)**: 92 The Parade. **Oadby Post Office (23)**: 34 The Parade, inside the convenience store. **National Westminster Bank (26)**: 5 The Parade. All except the Post Office have a cash machine.

Supermarkets: There is a large **Asda store (28)** on Leicester Road (A6) on the way to Oadby; it also has a cash machine – the closest to the convention. There is also a **Sainsburys (29)** on the other side of Oadby centre, on the right hand side of the A6. Also in The Parade is **M&S Food (40)**. And just North of the Parade is a **Spar (38)** at the BP Petrol station.

Chemists: There is a branch of **Boots (30)** at 35 The Parade, and a **Lloyds Pharmacy (31)** located at 9 The Parade. There is also a Pharmacy in **Asda (28)**.

The Botanic Garden (37) is located on Stoughton Road South. It's open from 10:00-17:00 every day in summer.

Eating out in Oadby

If you're looking for Indian food, Oadby has you covered. **Leeja Palace** can be found on the Parade, Oadby's main shopping street. It appears to be back to normal after last years' fire. It offers high quality food at around £8 per dish (2016), and good service. Delivery is free on orders over £10, and there is a 20% discount for takeaways. Very Popular with ManorCon attendees on Saturday and Sunday night. **Swatlands** is also a favourite of ManorCon attendees, feedback has generally been good, especially for the chefs specials. Dishes are around £10 (2016), and it coped OK with a party of 7, but has also been reported as having slow service – it is rather small. Its service also got the thumbs-up, as did the English options. There is also a **Tipu Sultan** on the Parade, which is one of a restaurant chain.

If Indian isn't your thing, there's also a few Oriental restaurants and takeaways. **Oadby Garden** is a takeaway on the Parade which has also been regularly used by the ManorCon committee. **Yum Sing Cantonese Restaurant** is just around the corner from the Parade in Leicester Road, and is another restaurant that is recommended by the ManorCon Committee. Main dishes are around £7 (2015). However, even on a mid-week night there is often a 2-hour wait for a table, so it is advisable to book well in advance if you want to eat here. Also on the Oriental front, there's **Oriental Star Takeaway** and **New Lucky House**, both of which are Chinese Takeaways; the former is reported to sell decent food.

For Italian food, **Cheikho's Restaurant** is on Leicester Road, it has a comprehensive menu, including a good selection of fish, chicken, salads and meat dishes. Note also that it is closed on Sunday and Monday. For something quicker, **Pizza Mondo**, **Papa Johns Pizza** and **Fireaway Pizza** are all in The Parade, and all do delivery. The first has been used by ManorCon attendees in the past, costing around £7 (2016) for a large pizza, offering reasonably good pizzas with quite fast delivery; it also now does curries.

For Pub food, **Grange Farm**, and **The Lord Keeper of the Great Seal** are pubs in Oadby which serve food. **Grange Farm** is a converted farm/stable, which makes for a fairly dark setting. The food is good, but the drinks aren't cheap. **The Lord Keeper of the Great Seal** is a surprisingly decent example of the Wetherspoon's chain with standard, cheap food. Another pub-restaurant is the **Cow and Plough** which retains 100% positive feedback. The pub has multiple guest beers, plus beers from their own brewery, and the food is typical of a top quality pub, with main courses around £10-£12 (2016), eaten either in the restaurant area, or if the weather's good, outside. The **Black Dog** pub also received good reviews in 2016 for real ale, serves good food, around £7 (2016), but only until 21:00, but avoid the pizza. There are now a few cafes on The Parade, **Chestnuts Coffee Shop** is a Café at 15 The Parade and looked popular when I passed it last year. **Demilhs Cafe** was new last year and Bru is now the latest! There is also a **Costa** in close proximity.

Further afield, **The Wheel Inn** is further along London Road (good scores from Trip Advisor) and slightly further along you'll find the **Sports Lounge**, a sports bar. Of course, if you want really traditional, the other option is a Fish and Chip shop. Oadby has **Oadby Chippy** on the main road and **Oadby Fish Bar**. Finally, two more options if you want quick food. There is a **Subway**, a **Greggs** and **TJ's Oadby Kebab House**, all on The Parade. And finally to finish your meal, there is now a dessert restaurant in the Parade, **ShakeHouse**.

A number of recommended restaurants mentioned in the text above are as follows (but not all are open on Sunday night!): As you can see. Some of the dates of last favourable review are a little dated now, so please let us know any reviews you might have.

1. Leeja Palace	13 The Parade, Oadby, LE2 5BB	0116 271 0482	2022
2. Oadby Garden	83 The Parade, Oadby, LE2 5BB	0116 271 3509	2017
3. Chestnuts Coffee Shop	15 The Parade, Oadby, LE2 5BB	0116 271 1445	
4. Swatlands	38 London Rd, Oadby, LE2 5DH	0116 271 1117	2016
5. Cow and Plough	2 Gartree Road, Oadby, LE2 2FB	0116 272 0852	2016
7. Tipu Sultan	12-16 The Parade, Oadby, LE2 5BF	0116 271 5553	
8. Yum Sing Cantonese Restaurant	11 Leicester Rd, Oadby, LE2 5BD	0116 271 6331	2022
10. Oriental Star Takeaway	61 Leicester Road, Oadby, LE2 4DF	0116 271 2324	2011
11. China Masterchef	11 Stoughton Road, Oadby, LE2 4DS	0116 271 1688	
12. Cheikho's Restaurant	9 Leicester Rd, Oadby, LE2 5BD	0116 271 1933	2009
13. Pizza Mondo & Curry House	4 The Parade, Oadby, LE2 5BF		
14. Papa John's Pizza	90 The Parade, Oadby LE2 5BF	0116 271 0400	2016
15. Costa	29-31 The Parade, Oadby EL2 5BB	0116 272 0810	
16. Grange Farm	Florence Wragg Way, Oadby, LE2 4QZ	0116 271 5088	
17. Blaze N Grill	79 The Parade, Oadby, LE2 5BB	0116 502 3333	
18. Bru	22 The Parade Oadby, LE2 5BF		
19. Oadby Chippy	7 Stoughton Road, Oadby, EL2 4DS	0116 271 5555	
20. Oadby Fish Bar	81 Highcroft Ave Oadby LE2 5UH	0116 271 9919	2011
22. ShakeHouse	94 The Parade, Oadby, LE2 5BF	0116 271 4735	
24. Greggs	28 The Parade, Oadby, LE2 5BF	0116 271 8395	
32. Demilhs Cafe	37 The Parade, Oadby, LE2 5BB	0330 174 1295	
34. TJ's Oadby Kebab House	71 The Parade, Oadby LE2 5BB	0116 271 0595	
35. Lord Keeper of the Great Seal	96-100 The Parade, Oadby LE2 5BF	0116 272 0957	2015
36. Subway	76 The Parade, Oadby LE2 5BF	0116 271 6662	2014

41. Cafe Makaan	41C The Parade, Oadby LE2 5BB	0116 380 5672	
42. The Black Dog	23 London Road, LE2 5DL	0116 210 2479	2016
44. Gingerbread Cottage	50 London Road, Oadby, LE2 5DH	0116 271 4677	
45. Costas Fish Bar		0116 319 2100	
46. The Wheel Inn	99 London Road, LE2 5DP	0116 271 7510	
47. Sports Lounge Oadby	115 London Road, LE2 5DP	0116 271 1234	
48. Fireaway Pizza	63 The Parade, Oadby, LE2 5BB	0116 271 2444	

Eating out in Central Leicester

Leicester excels in authentic Indian restaurants but also offers truly cosmopolitan dining, sometimes with live music. The range of cafes and restaurants in Leicester is extensive; lively Spanish tapas bars, wonderful Italian cuisine, Mexican, Chinese, Creole, French, Greek and Arabic. Melton Road hosts some of England's most delicious and mouthwatering Indian cuisine, whilst London Road has the most delicate and powerful Italian recipes in Leicester. Narborough Road brings all cultures together by offering a wide variety of cuisine.

At **The Case Restaurant and Champagne Bar** in Hotel Street, you can enjoy international cuisine in classy surroundings. The **Casa Romana** in Albion Street offers a real slice of Italian culture as well as great atmosphere and splendid dishes. There is also **Altro Mondo**, rated highly by ManorCon visitors. There are so many good Indian restaurants in Leicester that you could visit a different one almost every week for a year. **Kayal** on Granby Street is close to London Road railway station and serves very good South Indian cuisine according to a ManorCon attendee last year (and Trip Advisor!) This is authentic Kerala cuisine, not typical UK curry house fare. **Chef and Spice** on Hinckley Road is also very well regarded.

If you are vegetarian, you are in the right city, particularly during the day. **The Good Earth** in Free Lane is the city's longest established wholefood restaurant, open mornings and afternoons Monday to Saturday and also on Friday evenings with live music. **Bobbys** in Belgrave Road is a Vegetarian only Indian restaurant, and offers a buffet for just £8 per head, which given the quality of the food, is excellent value. You might also try **Sharmilee Sweet Mart** in Belgrave Road for more vegetarian Indian fare. Also, for Turkish BBQ, you could try **Istanbul** which is said to be cheap and fast, busy, but plenty of staff. For Tapas, try **Barceloneta**, which continues to get favourable reviews from ManorCon attendees. The best place in town is supposedly **North Bar and Kitchen** on Hinckley Road, which is getting good reviews around town for its British and vegetarian food.

The Case	4-6 Hotel Street	0116 251 7675	
Casa Romana	5 Albion Street LE1 6GD	0116 254 1174	
Altro Mondo	10-12 Humberstone Rd LE5 0AR	0116 253 7567	
Kayal	153 Granby Street LE1 6FE	0116 255 4667	2022
Chef and Spice	1 Andrews St, LE3 5PG	0116 242 2240	
The Good Earth	19 Free Lane LE1 1JX	0116 262 6260	
Bobby's	154-156 Belgrave Road LE4 5AT	0116 266 2448	
Sharmilee	71-73 Belgrave Road LE4 6AS	0116 266 8471	
Istanbul	73 Narborough Road LE3 0LE	0116 255 7909	
Barceloneta	54 Queens Rd LE2 1TU	0116 270 8408	
North Bar and Kitchen	42 Hinckley Rd LE3 0RB	0116 255 5961	

Transport

Two taxi companies have been recommended by ManorCon attendees; Victoria Cabs (0116 270 6655) offer taxis for up to 7 people, Gold Line (0116 273 1110) are reasonably priced. Direct Taxis (0116 272 1000) are recommended by the University. Victoria Cabs have smartphone apps, which sound a bit like Uber, with driver name, location and vehicle registration. Note that it was very difficult to book a cab on the Saturday night in 2022 (we later discovered there was a graduation ceremony and a large wedding in town).

Bus Tickets cost £4.20 for a ticket valid all day. The 31 Bus runs along the A6 past the end of Stoughton Drive South into central Leicester. (2 buses an hour on Sunday. More frequently at other times).